



# UNIVERSITA' DEGLI STUDI DI MESSINA

Dipartimento Servizi Tecnici-U.O. Polo Città

pag. 1

## ELABORATI GRAFICI

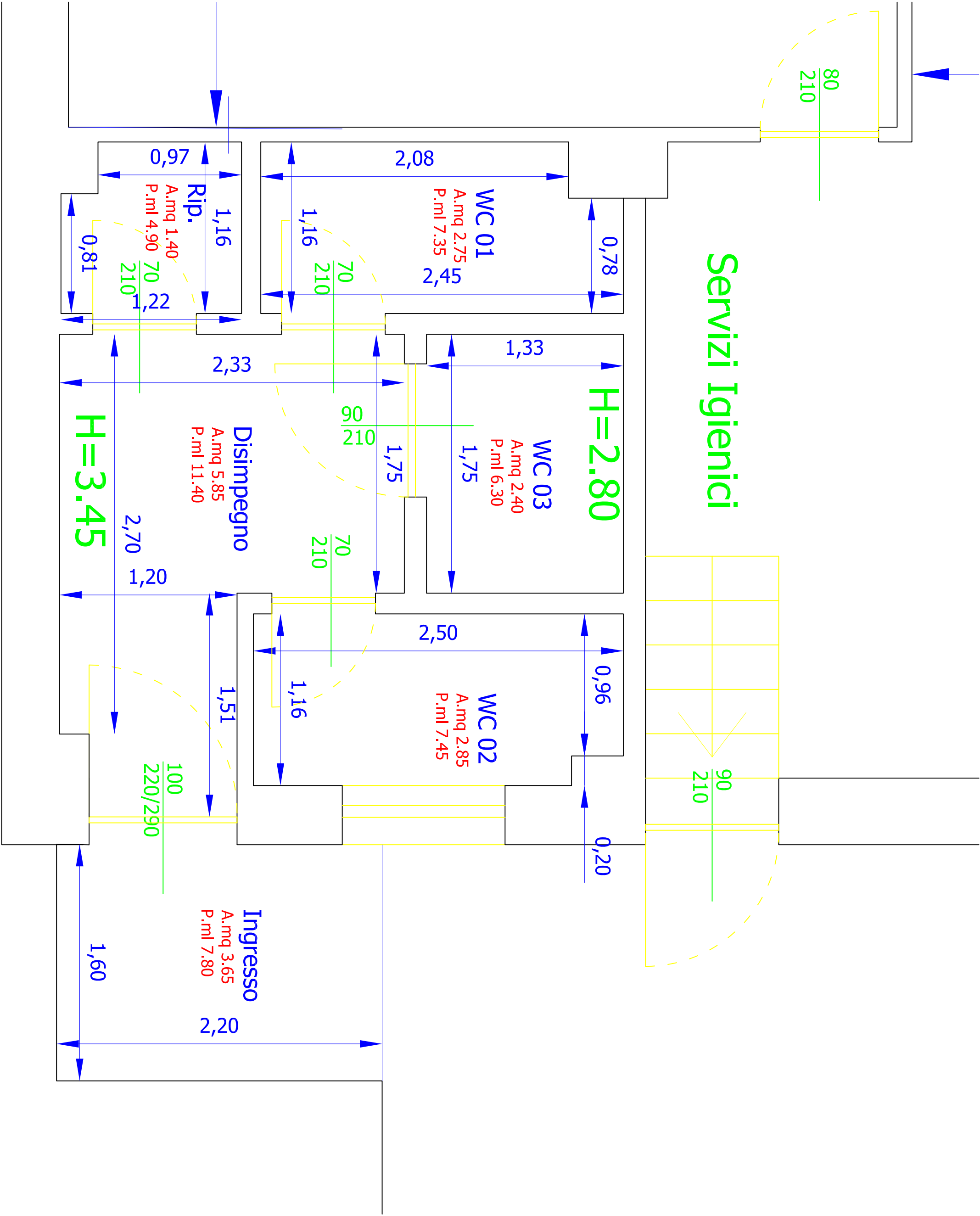
**OGGETTO:** Lavori di manutenzione ordinaria da eseguire presso vari edifici del Polo Città dell'Ateneo ( Orto botanico, Diritto Privato, Edificio Osservatorio Sismologico).

**COMMITTENTE:** UNIVERSITA' DEGLI STUDI DI MESSINA

Messina, 12/05/2022

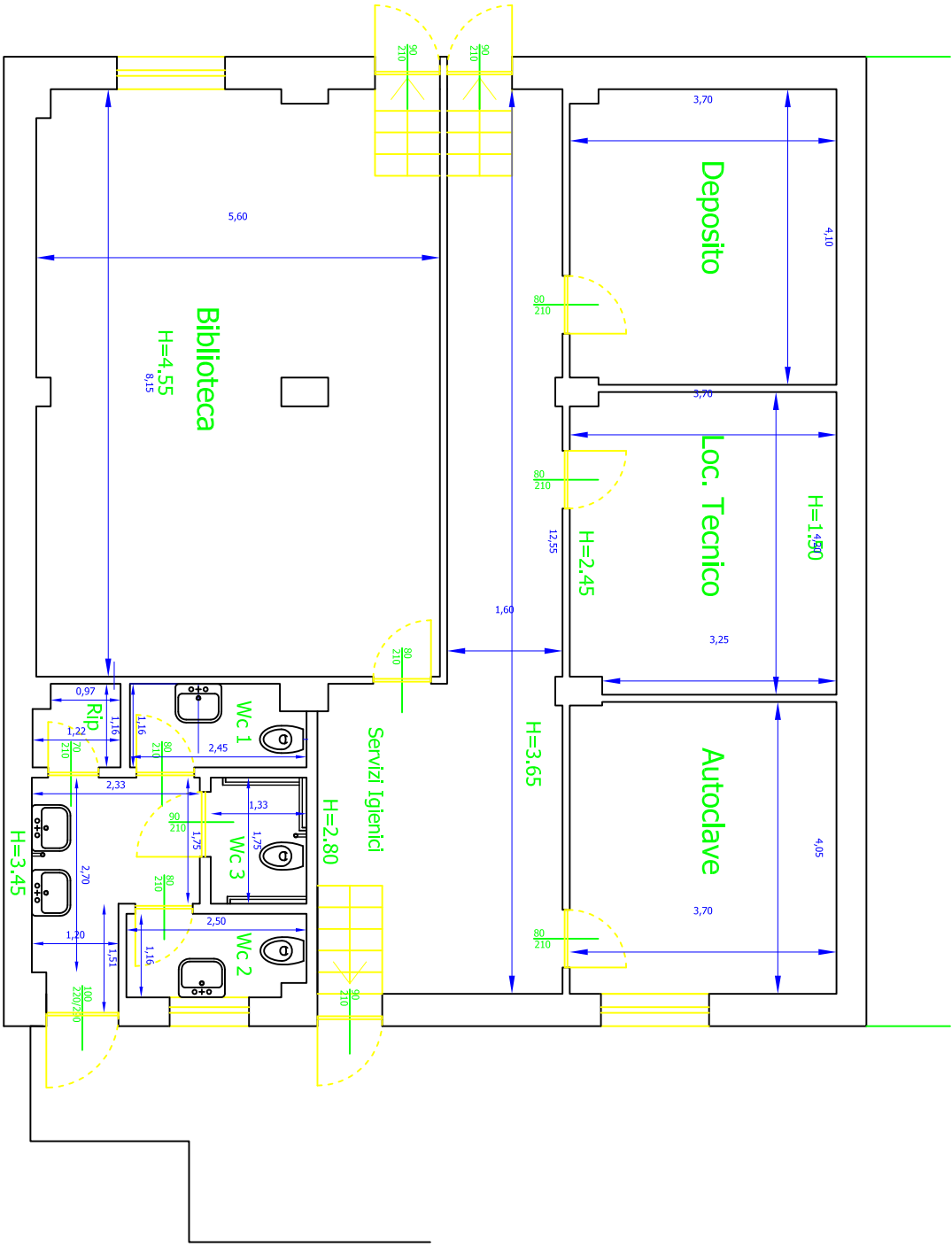
### IL TECNICO

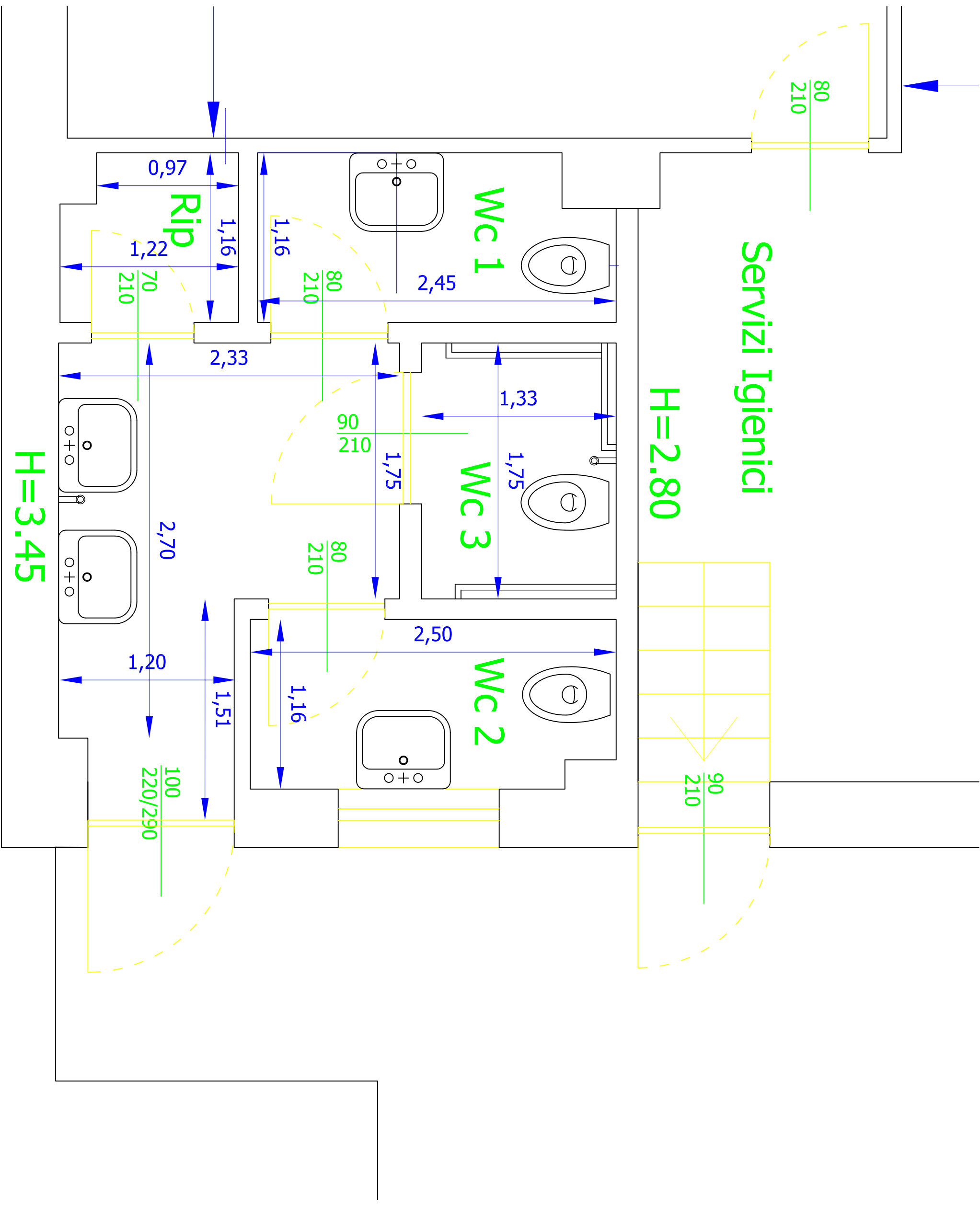
Geom. Renato Mommo Arch. Aurelio Mondello



Edificio Diritto Privato

PIANTA PIANO SOTTOSTRADA  
PROGETTO

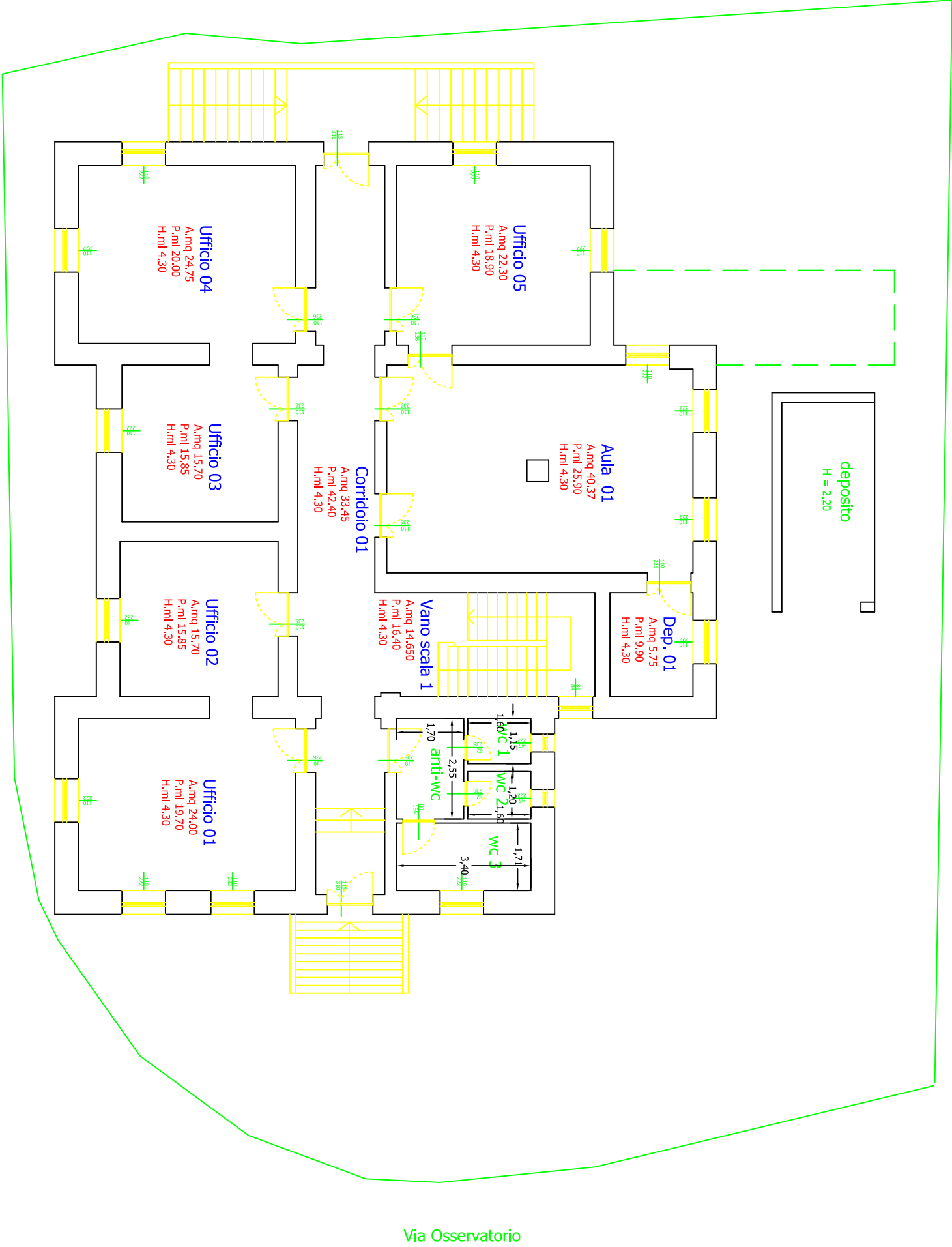
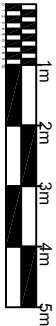




Edificio Osservatorio Sismologico

PIANTA PIANO TERRA scala

H. 4,30



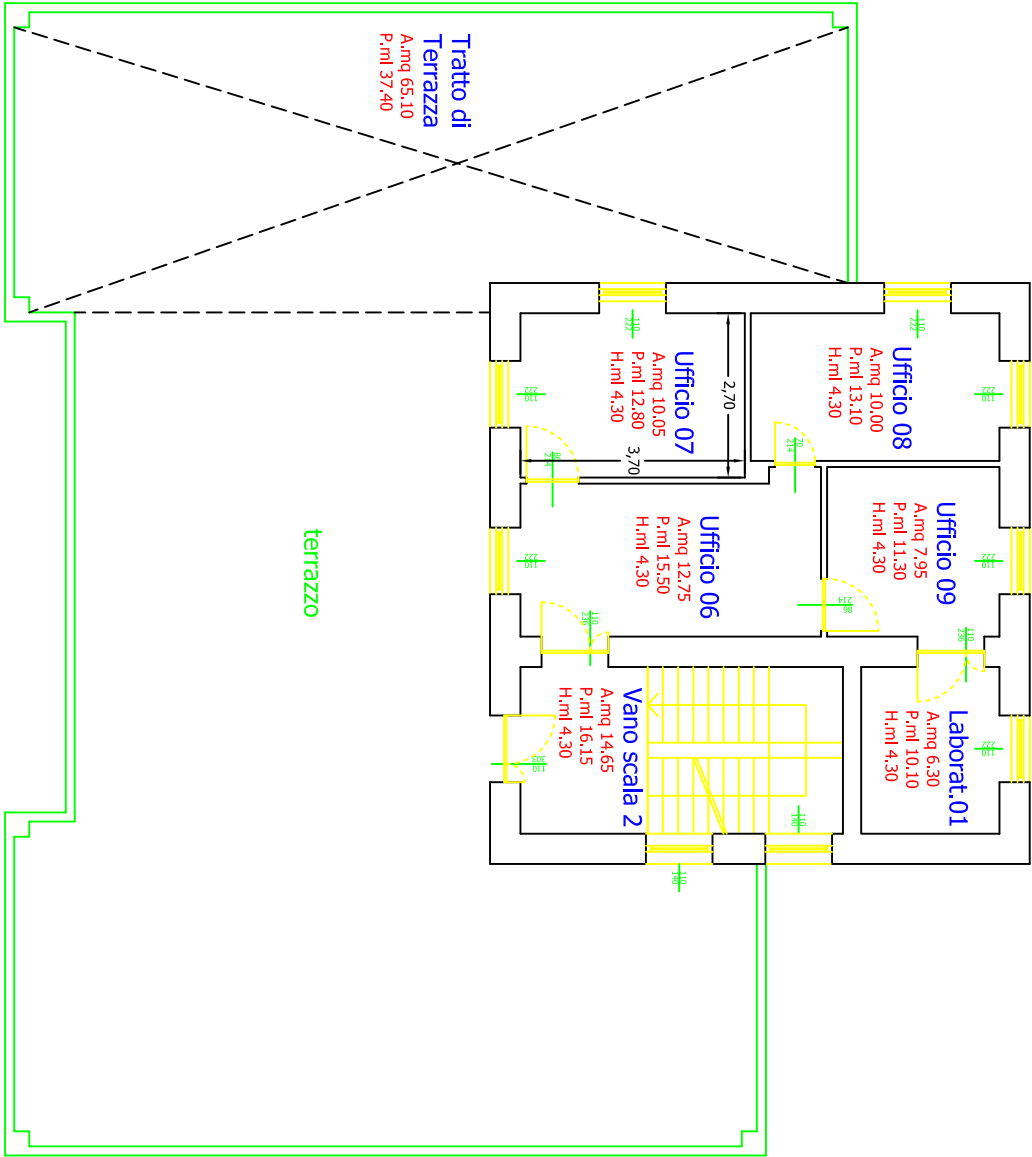
Edificio Osservatorio Sismologico

PIANTA PIANO PRIMO

scala

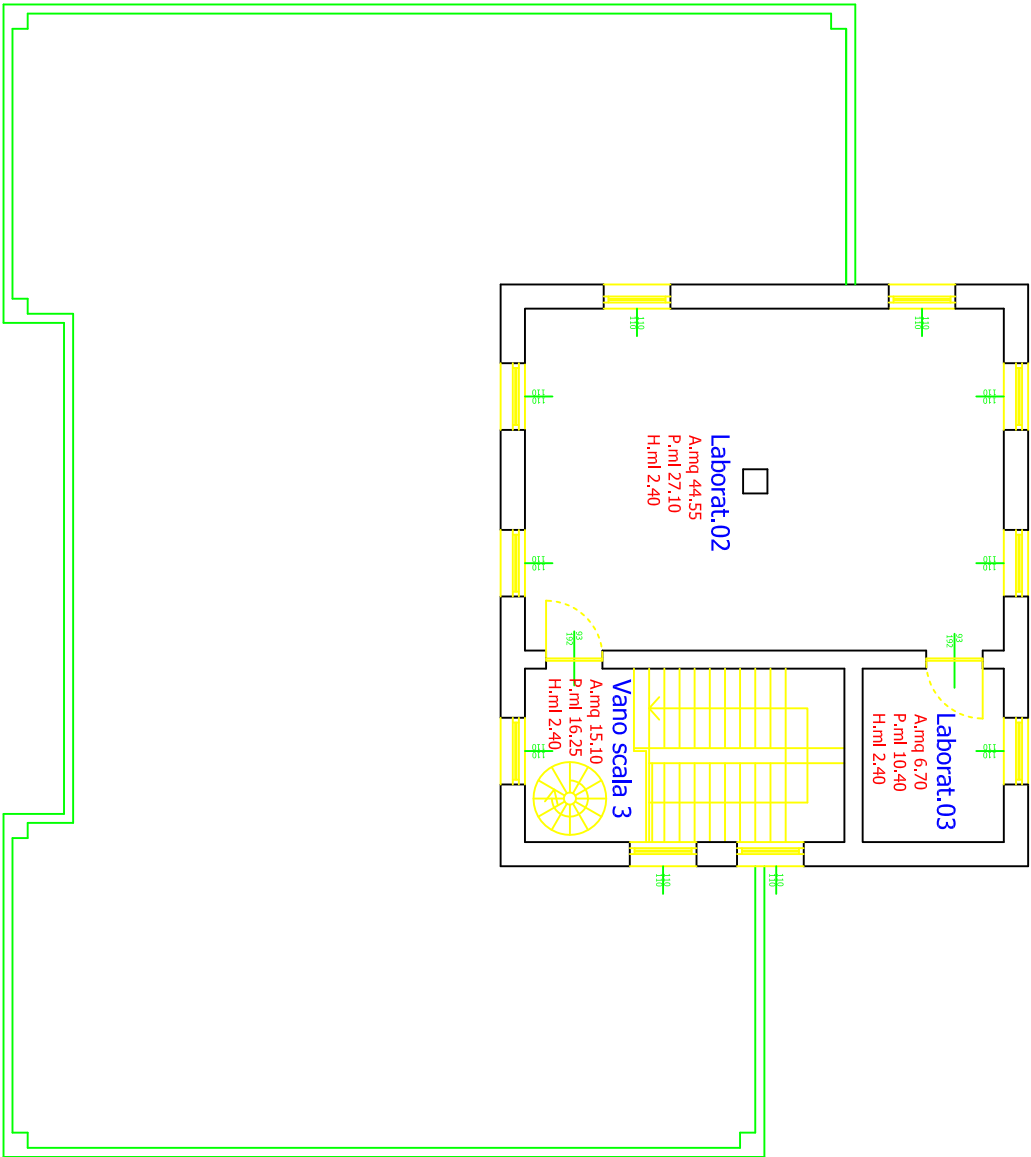


H. 4,30



Via Osservatorio

Via Osservatorio



Via Osservatorio

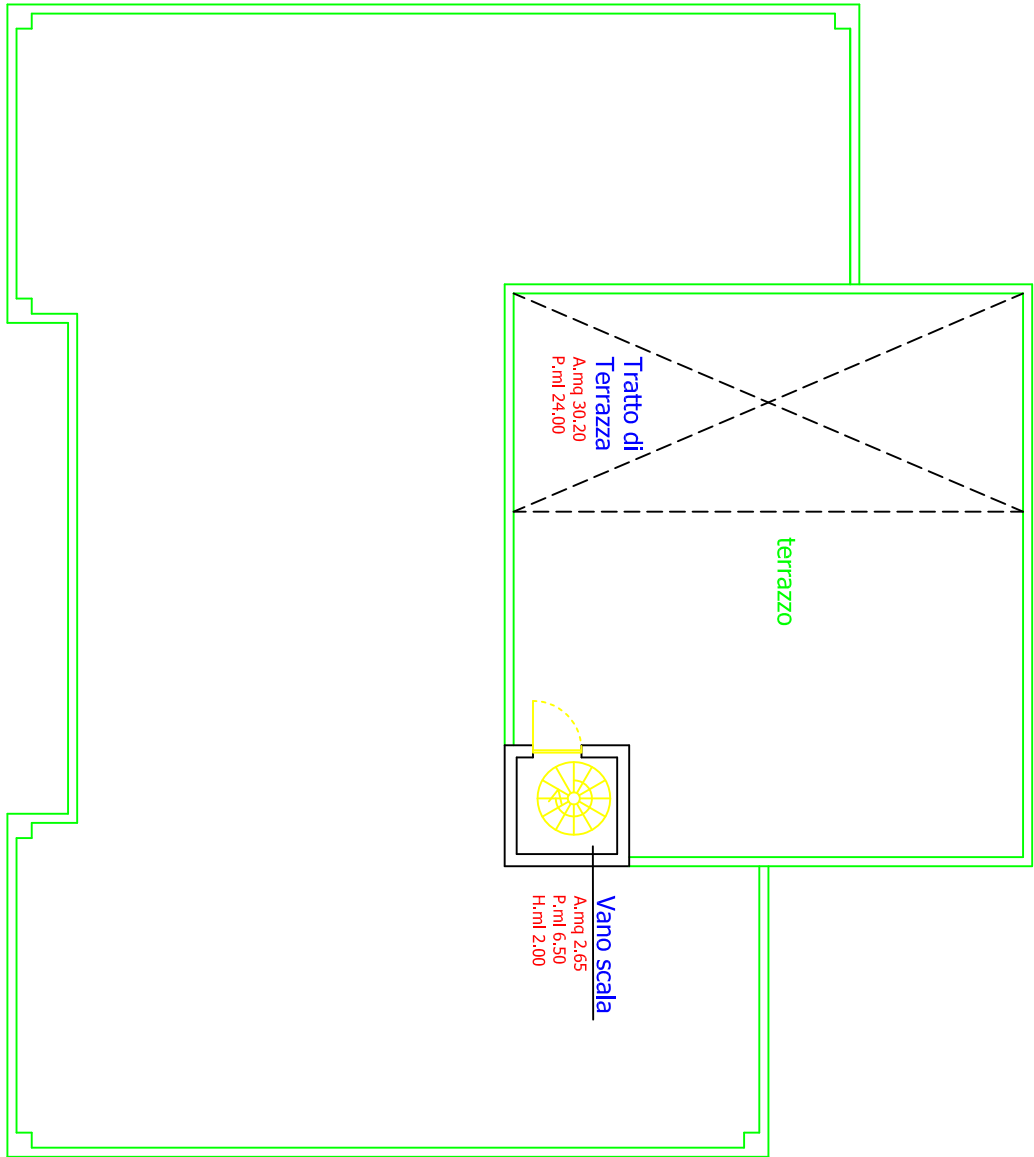
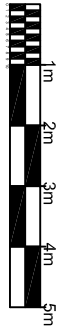
Via Osservatorio

Edificio Osservatorio Sismologico

PIANTA PIANO COPERTURA

scala

H. 2,00



Via Osservatorio

Via Osservatorio